

2017-2018

	- 1 -
	- 2 -
1.	- 2 -
2.	- 2 -
3.	- 3 -
4.	- 3 -
	- 8 -
1.	- 8 -
2.	- 9 -
3.	- 9 -
4.	- 9 -
	- 11 -
1.	- 11 -
2.	- 12 -
3.	- 12 -
4.	- 12 -
5.	- 13 -
6.	- 14 -
7.	- 14 -
	- 15 -
1.	- 15 -
2.	- 15 -
3.	- 16 -
4.	- 16 -
	- 16 -
1.	- 16 -
2.	- 17 -
3.	- 17 -
4.	- 18 -
5.	- 19 -
6.	- 19 -
7.	- 19 -

	- 20 -
1.	- 20 -
2.	- 20 -
3.	- 20 -
4.	- 20 -
5.	- 22 -
6.	- 23 -
	- 24 -
	- 24 -

		2	"	"		2	"
"		6				8	"
"	11	"	"	3	"	"	24
		43			1		

2017-2018

1 2017-2018

37

5

8

2

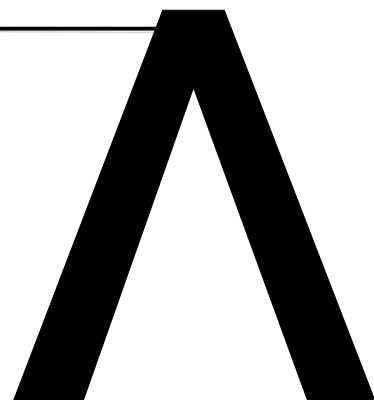
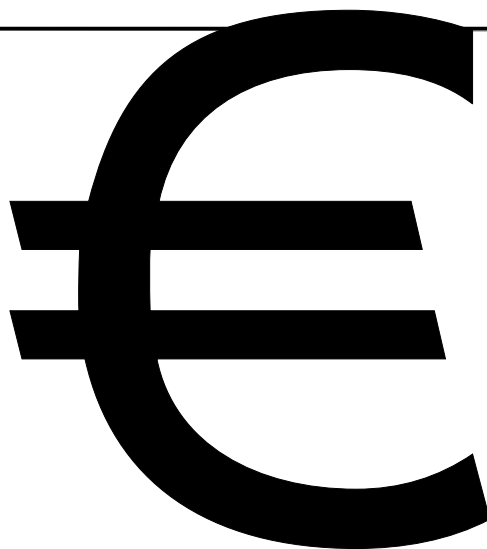
2

()

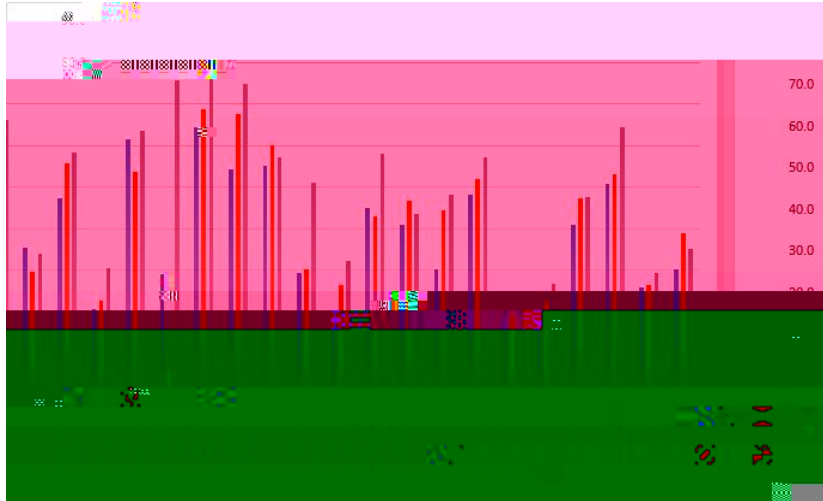
b +UvÑ
4



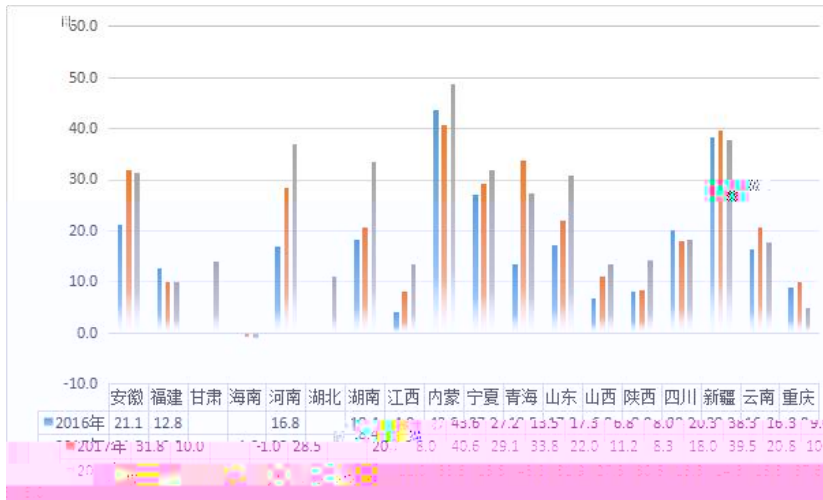
“ ”



18 12 50 9 2016-2018
2017 1 2

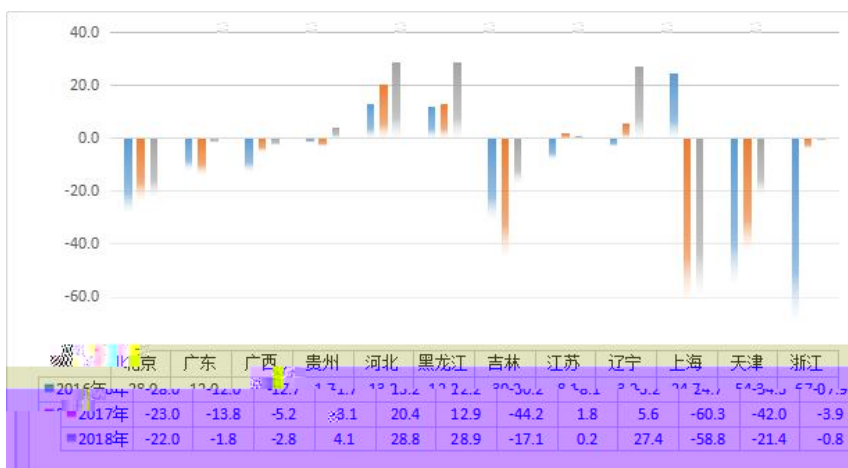


1 2016-2018

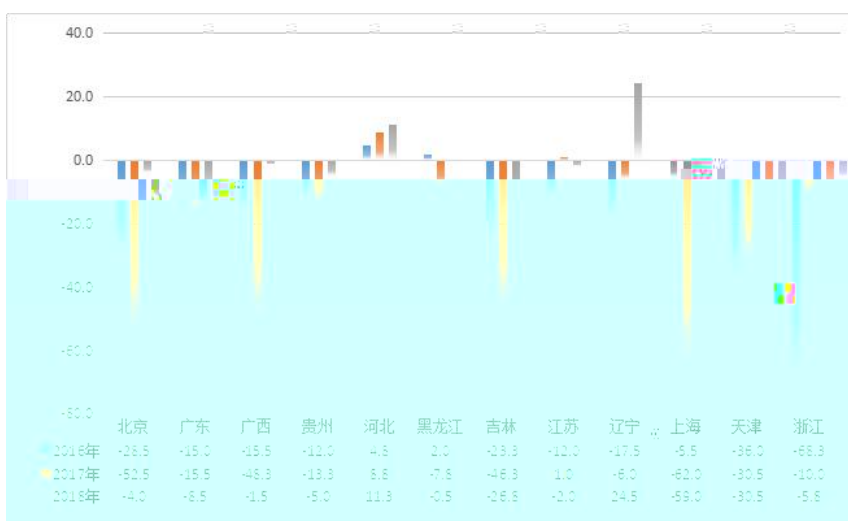


2 2016-2018

12 2017 2016-2018 11
2017 3 4



3 2016-2018

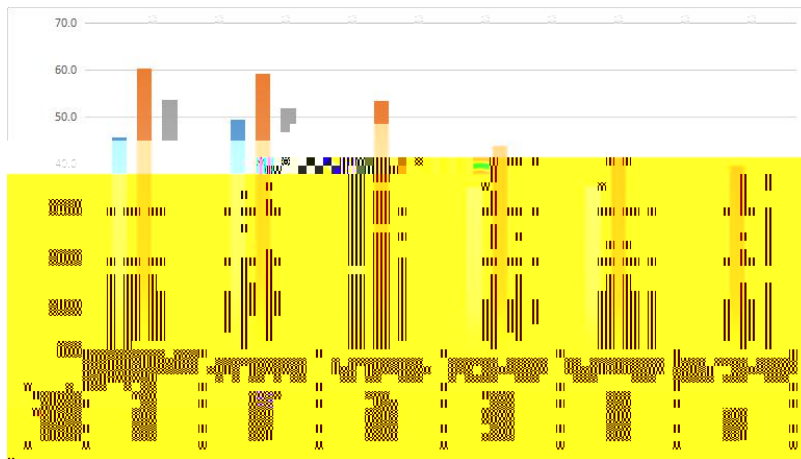


4 2016-2018

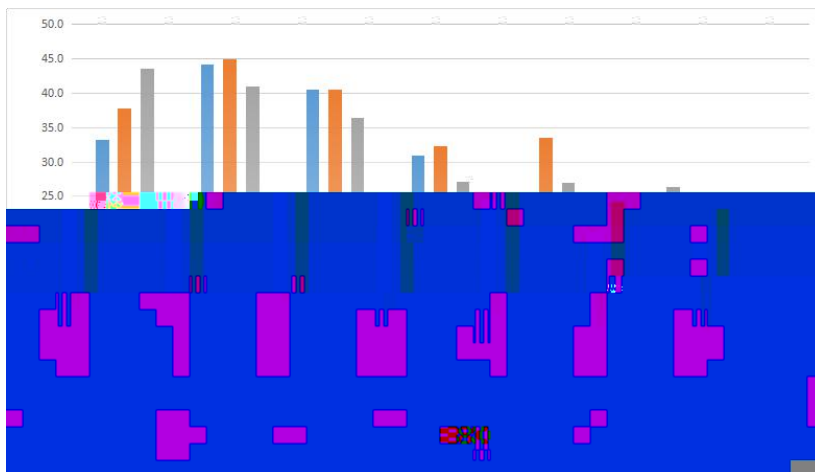
2				45		30	764
2017	252	2016	418				
3							
4							
	240	240			98%	99%	
236			235				
2							
2018		3186			66.8%		

70% 40 2684 174
 154 59 59 16
 493 19 2017 6
 500.8 26.8 2017 4.2

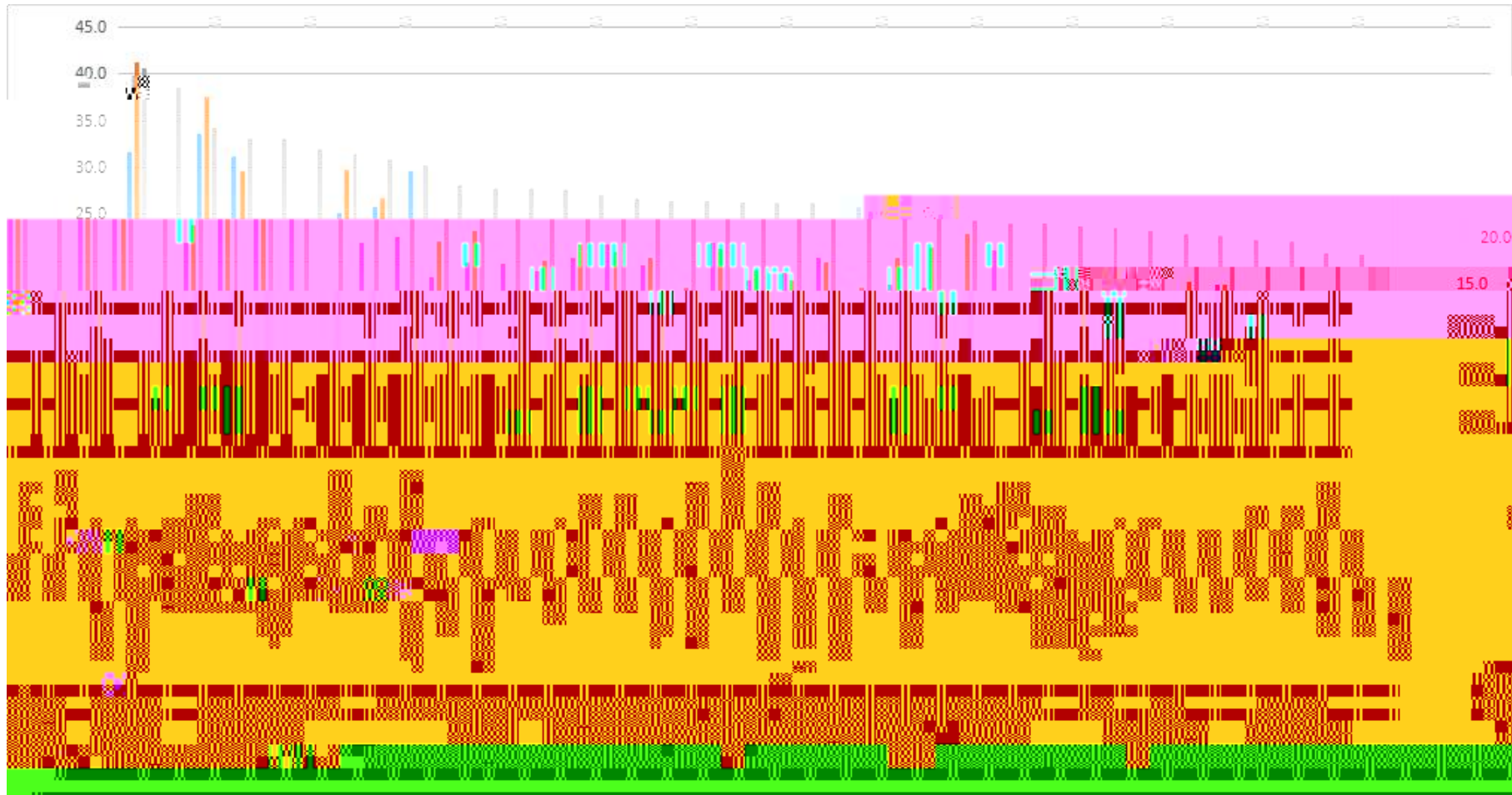
50 5 40
 11 30 2016-2018
 5 6 7



5 2016-2018



6 2016-2018



7 2016-2018

		528	10	2017	6
532.4			5	17.6	7
		3			
3					
%					
		1,288	320		
0.25	"	"	180	13.98%	
	595		46.2%		
	1,164		90.37%		
	3	4	5		
			3		

		%		%
	185	14.36	128	40
	410	31.83	142	44.38
	645	50.08	42	13.12
	6	0.47	1	0.31
	42	3.26	7	2.19
	1,288	100	320	100

		%		%
	713	55.36	85	26.56
	451	35.02	143	44.69
	123	9.55	90	28.12
	1	0.08	2	0.62
	1,288	100	320	100

5

		%		%
35	305	23.68	37	11.56
36-45	641	49.77	87	27.19
46-55	282	21.89	147	45.94
56	60	4.66	49	15.31
	1,288	100	320	100

&"

	22582		19125		2959
315	78	105	16181		26204.6
1288		320	1448		18.10
		794			55.52%
2502			42.98%		
		271		18.95%	614
			10.55%		268
		18.74%	581		
	9.98%				
		644		45.03%	
1,912			32.85%		
597			41.75%	1,624	
		27.9%			
			207		222
		93.24%			

"

2017		8,420		959.05	
	1,155.95		4402.61		501.46
	604.42				

("

1

	1,210,704.97		1,210,704.97
	298,594		952,047

			+	387, 203
	92, 386			120, 309
30, 800		185, 222		13, 858
9	112, 558			
	17. 15			5. 33
8. 2		0. 61		4. 98
	6			
	6			
		387, 203		17. 15
		120, 309		5. 33
		185, 222		8. 2
		13, 858		0. 61
		112, 558		4. 98

2

2017	2	41, 566
5, 598	1, 943, 973	90, 988
3, 394, 561	66	"
"	"	"

24

98	1	2017
259, 397	10, 021, 302	

-	-	-	-	"				"
	"		2014				"	" "
"			"				2017	101
	9	2017		65				
" 2017		"						
					"	"		
							2018	
	6	4	15					
		40						
					2017- 2018		92	
)"								
		30						
2017- 2018								821
		15	226	580				"
+"			631					2

6	7			1	3		
	2018	"	"		MBA		
2018							1
1	2			"	+"		
2018							
			2018				
		2018					
"		"					
						31	ERP
*"							
							2018 163
	4997						
	"	"					
	2018	1099					95.6%
				2018			
"	"		1	2			
	2018						
2	5	7		6			
+"							
					"	"	2
						"	" 1
					"	"	4

%'

"

"

"

"

&"

"

"

"

"

"

"

"

"

"

23. 2% 28. 17% 25. 41%

4 1 16 1 292

2

("

" "

" " "

" "

" "

" " 7

PDS

" " " "

" "

" " " "

" "

" "

" "

&"

1-2

6

1

130

60

" "

("

1

" "

2017- 2018

80

" "

91. 53 90. 41

2

2017- 2018

461

QUALIFICATION

%

Year	Count	Percentage
2018	4,864	97.05%
2018	4,840	99.51%
2018	766	15.8%
2018	34	
2018	4840	93.9%
2018	627	49%
2018	4545	51%
2018	7	30%

		%
62	53	85. 48
29	28	96. 55
65	60	92. 31
64	58	90. 62
236	222	94. 07
61	59	96. 72
70	69	98. 57
59	55	93. 22
235	223	94. 89
57	53	92. 98
124	122	98. 39
53	49	92. 45
194	185	95. 36
59	55	93. 22
117	109	93. 16
57	55	96. 49
159	151	94. 97
56	54	96. 43
97	93	95. 88
88	85	96. 59
64	58	90. 62
56	56	100
152	144	94. 74
87	83	95. 4
120	116	96. 67
126	122	96. 83
52	49	94. 23
61	58	95. 08
39	37	94. 87
136	130	95. 59
58	54	93. 1
80	78	97. 5
117	112	95. 73

2017-2018

		%
	71	92.21
	56	96.55
	61	98.39
	60	90.91
	91	94.51
	67	80.6
	113	86.92
	46	91.3
	59	88.14
	66	87.88

8				
				%
	36.5	55.4	8.1	0
	35.7	54.6	9.7	0
	39.2	51.4	9.4	0
	33.9	51.7	14.4	0
	38.3	50.4	11.3	0
	39.9	48.6	11.3	0.2
	37.8	49.1	12.6	0.5
	37.5	51.7	10.8	0
	34.6	53.4	11.5	0.5
	34.6	51.3	13.9	0.2
	32.1	49.9	17.8	0.2
	27.7	63.5	8.1	0.7

* "

"

"

14

1993

1983

1980

1980

1979

GPS

1977

1974

1978

1977

1977

	1978							
1978								
		1981						
				1993				
1978								
		1987						
							2002	
							2011	
4	28	"	"			"		"

"

"

7

" "

" "

"

" "

"

